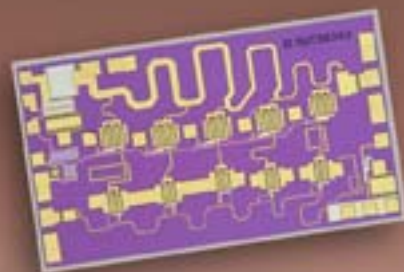


2008-2009 Product Selection Guide

Low Noise Wideband
(6-18GHz) Amplifier Module

Distributed Amplifier

802.16



Space

Low Phase Noise

Industrial



PHEMT

WiMax

Ultra High Linearity



Standard & Custom

Military

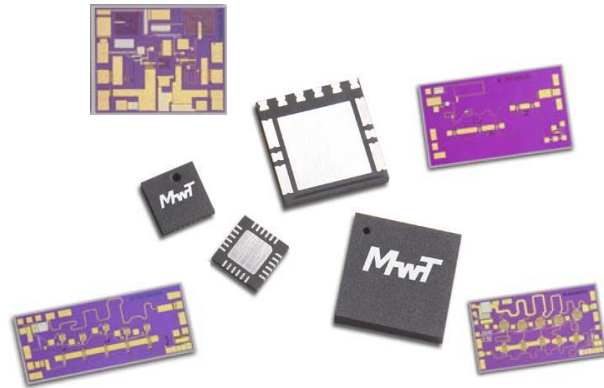
MMIC's



New MMIC Products



- High Performance/Quality MMIC Based on InGaP HBT, pHEMT, and Linear MESFET Technologies
- High Linearity, Fully Matched WiMax Power Amplifiers
- High Power/Efficiency, Wide and Narrow Band Power Amplifiers
- High Linearity, Broadband Gain Blocks



WiMAX / WLAN Linear Power Amplifiers

Model	Pkg /Chip	Freq	Linear Gain	Gain Flatness	Input RL	Output RL	Pout @ -1 dB	Pout @ 2.0% EVM	OIP3	Vgs	Vdd	DC Current
> New		(GHz)	Typ/Min (dB)	Typ/Max ± (dB)	Typ (dB)	Typ (dB)	Typ/Min (dBm)	Typ (dBm)	Typ (dBm)	(V)	(V)	Typ/Max (mA)
> MHA-242733-Q5	Q5	2.4-2.7	14.0 / 12.0	1.0 / 1.5	8.0	8.0	33.0 / -	25.0	46.0	NA	7.5	640 / 800
> MHA-333833-Q5	Q5	3.3-3.8	25.0 / 22.0	2.0 / -	10	10	33.0 / -	25.0	44.0	NA	7.5	800/1000
> MMA-343737-Q10	Q10	3.4-3.7	13.0 / 12.0	-	9.5	5.0	36.5 / -	29.5	48.0	NA	8.5	1000 / -
> MHA-495433	Chip	4.9-5.4	10.0 / -	0.5 / -	10	15	33.5 / -	25.6	45.0	NA	9.0	600/-
> MMA-495930-Q4	Q4	4.9-5.9	20.0 / 18.0	1.0 / 1.2	8	8	30.0 / -	22.0	45.0	-0.9	7.5	450 / 500
> MMA-495933-Q5	Q5	4.9-5.9	10.5 / 10.0	-	9.6	4.8	33.0 / 32.5	26.0	46.0	-1.0	7.5	600 / -

Wideband and Narrowband Power Amplifiers

Model	Pkg /Chip	Freq	Linear Gain	Gain Flatness	Input RL	Output RL	NF	Pout @ -1 dB	Vgs	Vdd	DC Current
> New	QFN	(GHz)	Typ/Min (dB)	Typ/Max ± (dB)	Typ (dB)	Typ (dB)	Typ (dB)	Typ/Min (dBm)	(V)	(V)	(mA)
> MMA-021015	Chip	2-10	18.0 / -	2.5 / -	-12	-15	4.8	17.0 / -	NA	6.0	89 / -
> MMA-022028	Chip	2-20	8.0 / 6.0	1.0 / -	10	10	4.5	28.0 / 26.0	-0.7	8.0	380 / 500
> MMA-061829	Module	6-18	8.0 / 6.0	1.0 / -	10	10	5.5	29.0 / 27.0	-0.7	8.0	380 / 500
> MMA-121630	Chip	12-16	26.0 / 24.0	2.0 / -	7	8	5.5	31.0 / 29.0	-0.7	8.0	560 / 650

Broadband Gain Block Amplifiers

Model	Pkg /Chip	Freq	Linear Gain	Gain Flatness	Input RL	Output RL	NF	Pout @ -1 dB	OIP3	Vdd	DC Current
> New		(GHz)	Typ/Min (dB)	Typ/Max ± (dB)	Typ (dB)	Typ (dB)	Typ (dB)	Typ (dBm)	Typ (dBm)	(V)	(mA)
> MHA-054020	Chip	.05-4	17.5 / -	0.8	13	15	4.5	18.5	38.0	5.0	100 / -
> MHA-054020-89	89	.05-4	17.5 / -	0.8	13	15	4.5	18.5	38.0	5.0	100 / -
> MMA-020624-Q3	Q3	2.0-6.0	17.0 / 15.0	1.0 / 1.5	12	12 ⁽¹⁾ /10 ⁽²⁾	3.5	25.0	40.0	8.0	250 / 300
> MMA-053223-Q3	Q3	.5-3.2	12.0 / -	1.5	10	10	3.5	24.0	42.0	6.0	120 / 200
> MMA-054025-Q3	Q3	.5-4	11 / -	1.0	10	10	3.5	25.0	44.0	7.5	- / 350

⁽¹⁾ @ 2-4 GHz, ⁽²⁾ @ 4-6 GHz

Contact Factory For Additional Information On Custom MMICs, Pricing and Delivery

Packaged MMICs are also available in chip form - contact factory

BLUE - In Production | BLACK - Engineering Samples Available, Production Starts December 2008

Over 25 Years of Technical Expertise and Innovation

Standard GaAs FETs / PHEMTs



- Ultra Linear, High Dynamic Range, Low Phase Noise
- GaAs Process is Approved for Space Applications with Proven Reliability
- Commercial, Industrial, Military, and Space Grades
- 100% Wafer Bond Pull, Die Shear, Wafer DC Burn In, and Bake Tests in Evaluation per MIL-PRF-38534
- 100% Die Probe Test with Data Recorded
- 100% Visual Inspection (to level 1, 3, or 4)
- 100% Idss Match to Provide Performance Consistency
- RF Sample Test Capability Available Upon Request
- Standard and Custom Device Specifications
- High-Rel and Space-Rel Screening Options Available
- RoHS (lead-free) Compliant Product Available

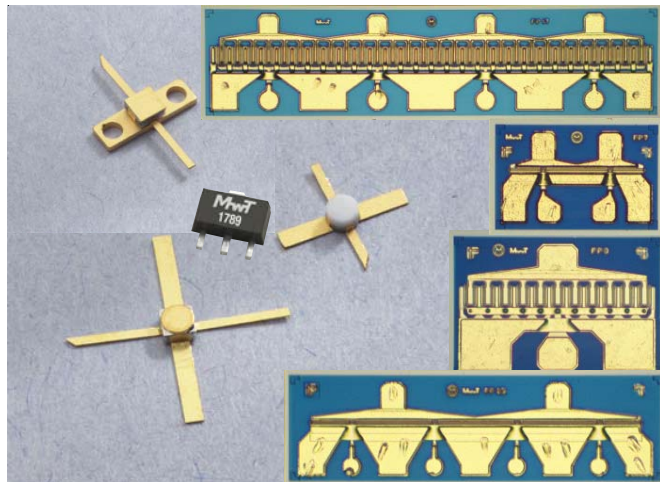
MwT Standard GaAs FETs/ PHEMTs RF Properties (DC Properties Listed on the next page)

Model	Package Available Sealed/ Hermetic	Gate Width/ Length	Gate Layout Method	Gate Drain Source Bond Qty	Chip Thickness & VIA mil, y/n	S.S. Gain @12GHz Typ/Min dB	N. F. @12GHz Typ/Max dB	Ga @ NF @12GHz Typ/Min dB	P-1dB @ 12GHz Typ/Min dBm	IP3 @ 12GHz Typ dBm	Nominal Chip Size um • um	Ideal Circuit
► New		um										
MwT-1	70, 73 / 71	630/0.3	single stripe	1, 1, 2	5, no	10.0/ 9.0	2.0/ -	7.0/ -	24.0/23.0	-	775 • 241	FB Amp
MwT-2	70, 73 / 71	630/0.3	single stripe	2, 2, 3	5, no	8.5/ 8.0	-/ -	-/ -	24.5/23.0	-	775 • 241	BA Amp
MwT-3	70, 73 / 71	300/0.3	single stripe	1, 1, 2	5, no	11.0/ 10.0	-/ -	-/ -	21.0/20.0	-	406 • 241	BA Amp
MwT-4	70, 73 / NA	180/0.3	single stripe	1, 1, 2	5, no	9.0/ 8.0	1.5/ 1.8	9.0/ 8.0	14.0/13.0	-	356 • 241	Osc & Amp
MwT-5	NA / NA	2*300/0.3	dual gate	3, 1, 2	5, no	13.0/ 12.0	3.5/ -	11.0/ -	19.0/15.0	-	406 • 241	Buffer Amp
MwT-7	70, 73 / NA	250/0.3	single stripe	2, 2, 2	5, no	10.5/ 10.0	2.0/ -	8.0/ -	20.0/18.0	-	356 • 241	BA/SE Amp
MwT-LP7	70, 73 / NA	250/0.3	single stripe	2, 2, 2	5, no	10.5/ 10.0	2.0/ -	8.0/ -	20.0/18.0	-	356 • 241	Oscillator
MwT-8	71	2400/0.3	Interdigit	2, 2, 3	4, no	7.5/ 7.0	-	-	28.0/27.0	-	673 • 305	Power Amp
MwT-A9	70, 73 / 71	750/0.3	single stripe	1, 1, 2	5, no	9.5/ 8.5	1.8/ -	6.5/ 6.0	25.5/23.0	-	419 • 292	FB Amp
MwT-A989	sot89	750/0.5	Interdigit	1, 1, 2	4, no	17.0/15.0 ⁽¹⁾	0.9 ⁽¹⁾	-	25.0/23.0	40	419 • 292	Power Amp
► MwT-A989SB	sot89	750/0.5	Interdigit	1, 1, 2	4, no	17.0/15.0 ⁽¹⁾	0.9 ⁽¹⁾	-	25.0/23.0	40	419 • 292	Power Amp
MwT-10	NA	83/0.3	single stripe	1,1,2	5, no	4.5/ 5.5	4.5/ 5.0	-/ -	11.0/12.0	-	279 • 241	BA Amp
► MwT-11	71	2400/0.3	Interdigit	2, 2, 3	4, no	9.0/ 7.0	-	-	30.0/28.0	-	775 • 343	Power Amp
MwT-16	-/ -	900/0.3	single stripe	6, 2, 7	5, no	8.5/ 7.5	-/ -	-/ -	27.0/26.0	-	1067 • 241	BA Amp
MwT-H17	89 / 71	2400/0.8	Interdigit	4, 4, 5	5, no	7.0/ 6.0	(2)	-	29.5/28.5	45/-	1130 • 279	BA/FB Amp
MwT-1789HL	sot89	2400/0.8	Interdigit	4, 4, 5	4, no	-	(3)	14.0 ⁽¹⁾	28.0	46	1130 • 279	High Linearity
MwT-1789LN	sot89	2400/0.8	Interdigit	4, 4, 5	4, no	-	(4)	16.0 ⁽¹⁾	28.0	46	1130 • 279	Low Noise
MwT-1789SB	sot89	2400/0.8	Interdigit	4, 4, 5	4, no	-	(3)	18.0 ⁽¹⁾	28.0	44	1130 • 279	Power Amp
► MwT-17Q3	QFN	2400/0.8	Interdigit	4, 4, 5	4, no	18.0/16.0 ⁽¹⁾	1.5 ⁽¹⁾	-	28.0/27.0	46	1130 • 279	Power Amp
MwT-H22	71	4800/0.5	Interdigit	6, 6, 7	4, no	12.0/ 9.0	-	-	33.0/31.0	48	1651 • 508	Power Amp
► MwT-H22Q4	QFN	4800/0.5	Interdigit	6, 6, 7	4, no	13.5/12.0 ⁽⁵⁾	-	-	33.0/32.0	48	1651 • 508	Power Amp
► MwT-H25	-	14400/0.5	Interdigit	6, 6, 7	4, no	10.0/ 9.0	-	-	37.5/36.0	48	2311 • 508	Power Amp
► MwT-PH5	-	300/0.3	single stripe	1, 1, 2	4, no	18.0/ 15.0	2.0/ -	12.0/ -	20.0/18.0	-	406 • 241	Power Amp
MwT-PH7	70, 73 / 71	250/0.3	single stripe	2, 1, 2	4, no	13.5/ 12.0	-	-	24.0/22.0	-	356 • 241	Medium pow
► MwT-PH8	71	1200/0.3	Interdigit	2, 2, 3	4, no	10.0/ 9.0	-	-	30.0/29.0	-	673 • 305	Medium pow
MwT-PH9	70, 73 / 71	750/0.3	single stripe	1, 1, 2	4, no	10.0/ 9.0	-	-	27.0/26.0	-	419 • 292	Power Amp
MwT-PH11	71	2400/0.3	Interdigit	2, 2, 3	4, no	9.0/ 7.0	-	-	32.0/30.0	42	775 • 343	Power Amp
► MwT-PH15	70, 73 / 71	630/0.3	single stripe	3, 2, 5	4, no	12.0/ 10.0	-	-	28.5/27.0	-	775 • 241	Medium pow
► MwT-PH15QACSB	QFN	630/0.3	single stripe	3, 2, 5	4, no	11.0/ -	-	-	25.0/ -	-	775 • 241	Medium pow
► MwT-PH16	71	900/0.3	single stripe	6, 2, 7	4, no	11.5/ 10.0	-	-	30.0/28.5	-	1067 • 241	Medium pow
► MwT-PH16A	-	1600/0.25	Interdigit	4, 4, 5	4, no	11.0/ 9.5	-	-	31.0/29.0	-	1126 • 330	Medium pow

SB = Self-Biased (1) @2.0GHz, (2) noise figure = 0.8dB @ 0.9GHz, (3) noise figure = 3.0dB @ 2.0GHz, (4) noise figure = 1.3dB @ 2.0GHz, (5) @ 4.0GHz

Over 25 Years of Technical Expertise and Innovation

Standard GaAs FETs / PHEMTs



MwT Standard GaAs FETs / PHEMTs DC Properties (RF Properties Listed on the previous page)

Model	Device Type	I _{dss} Range Min/Max mA	G _m Tested Vds/Vgs V/V	G _m Typ/Min mS	V _p Tested at Vds/Ids V/mA	V _p Typ/Max (- V)	B _{vgso} Tested I _{gs} (- mA)	B _{vgso} Typ/Min (- V)	B _{vgdo} Tested I _{gd} (- mA)	B _{vgdo} Typ/Min V/V	V _{ds} Absolut Max V	Chip R _{th} Typ OC/W
➤ New												
MwT-1	MESFET	60 / 240	4.0 / 0.0	120 / 90	3.0 / 4.0	2.0 / 5.0	1.0	10.0 / 5.0	1.0	10.0 / 6.0	6.0	80
MwT-2	MESFET	60 / 240	4.0 / 0.0	100 / 75	3.0 / 4.0	2.0 / 5.0	0.4	12.0 / 6.0	0.4	12.0 / 8.0	7.0	80
MwT-3	MESFET	30 / 120	4.0 / 0.0	55 / 35	3.0 / 2.0	2.0 / 5.0	0.2	12.0 / 6.0	0.2	12.0 / 8.0	7.0	150
MwT-4	MESFET	18 / 66	3.0 / 0.0	35 / 27	3.0 / 1.0	1.5 / 4.0	0.2	8.0 / 5.0	0.2	8.0 / 6.0	6.0	250
MwT-5	MESFET	30 / 110	2.0 / 0.0	40 / 23	3.0 / 0.0	2.0 / 4.5	0.4	8.0 / 5.0	0.4	10.0 / 7.0	6.5	150
MwT-7	MESFET	26 / 98	3.0 / 0.0	45 / 36	3.0 / 1.0	1.5 / 4.5	0.4	8.0 / 5.0	0.4	8.0 / 6.0	6.0	180
MwT-LP7	MESFET	38 / 98	3.0 / 0.0	45 / 36	3.0 / 1.0	1.5 / 4.5	0.4	8.0 / 5.0	0.4	8.0 / 6.0	6.0	180
MwT-8	MESFET	120 / 480	2.5 / 0.0	160 / 144	3.0 / 5.0	2.0 / 5.0	1.2	12.0 / 8.0	1.2	12.0 / 8.0	7.5	45
MwT-A9	MESFET	78 / 282	2.0 / 0.0	120 / 95	3.0 / 5.0	2.0 / 5.0	1.0	10.0 / 5.0	1.0	10.0 / 6.0	6.0	70
MwT-A989	MESFET	100 / 200	2.0 / 0.0	90 / 120	3.0 / 5.0	2.5 / 5.0	1.0	10.0 / 5.0	1.0	10.0 / 6.0	8.0	75
➤ MwT-A989SB	MESFET	100 / 200	2.0 / 0.0	90 / 120	3.0 / 5.0	2.5 / 5.0	1.0	10.0 / 5.0	1.0	10.0 / 6.0	8.0	75
MwT-10	MESFET	8 / 30	3.0 / 0.0	12 / 16	3.0 / 0.5	1.5 / 4.0	0.1	4.0 / 7.0	0.1	5.0 / 7.0	5.0	450
➤ MwT-11	MESFET	240 / 920	2.5 / 0.0	380 / 290	3.0 / 16.0	2.0 / 5.0	2.4	12.0 / 8.0	2.4	12.0 / 8.0	8.0	28
MwT-16	MESFET	90 / 360	2.0 / 0.0	130 / 108	3.0 / 6.0	2.0 / 5.0	0.6	12.0 / 6.0	0.6	12.0 / 8.0	7.0	55
MwT-H17	MESFET	240 / 920	2.0 / 0.0	380 / 290	3.0 / 6.0	2.5 / 5.0	1.6	12.0 / 6.0	1.6	12.0 / 8.0	7.0	33
MwT-1789HL	MESFET	440 / 680	2.5 / 0.0	380	3.0 / 16.0	2.0 / 5.0	2.4	12.0 / 6.0	2.4	12.0 / 9.0	8.0	35
MwT-1789LN	MESFET	440 / 680	2.5 / 0.0	380	3.0 / 16.0	2.0 / 5.0	2.4	12.0 / 6.0	2.4	12.0 / 9.0	8.0	35
MwT-1789SB	MESFET	440 / 680	2.0 / 0.0	380	3.0 / 16.0	2.5 / 5.0	2.4	12.0 / 6.0	2.4	12.0 / 9.0	8.0	30
➤ MwT-17Q3	MESFET	440 / 680	2.5 / 0.0	380	3.0 / 16.0	2.0 / 5.0	2.4	12.0 / 6.0	2.4	12.0 / 9.0	8.0	35
MwT-H22	MESFET	800 / 1200	2.5 / 0.0	650 / 500	3.0 / 30.0	2.0 / 5.0	5.0	12.0 / 8.0	0.5	14.0 / 12.0	9.0	12
➤ MwT-22Q4	MESFET	800 / 1200	2.5 / 0.0	650	3.0 / 30.5	2.0 / 5.0	5.0	12.0 / 8.0	5.0	14.0 / 12.0	9.0	12
➤ MwT-H25	MESFET	2000/2600	2.5 / 0.0	1500 / 1000	3.0 / 150.0	2.0 / 5.0	14.0	12.0 / 8.0	14.0	16.0 / 14.0	12.0	6
➤ MwT-PH5	PHEMT	40 / 120	2.5 / 0.0	60 / 40	3.0 / 2.0	1.2 / 2.5	0.4	12.0 / 6.0	0.4	13.0 / 10.0	7.0	150
MwT-PH7	PHEMT	50 / 122	2.5 / 0.0	80 / 50	3.0 / 1.0	1.2 / 2.5	0.4	12.0 / 6.0	0.4	12.0 / 8.0	7.0	150
➤ MwT-PH8	PHEMT	240 / 600	2.5 / 0.0	320 / 240	3.0 / 8.0	1.2 / 2.5	1.2	12.0 / 6.0	1.2	13.0 / 10.0	8.0	40
MwT-PH9	PHEMT	120 / 292	2.5 / 0.0	200 / 150	3.0 / 5.0	1.2 / 2.5	1.0	12.0 / 6.0	1.0	13.0 / 10.0	8.0	56
MwT-PH11	PHEMT	440 / 800	2.0 / 0.0	800 / 450	3.0 / 16.0	1.2 / 2.5	2.4	12.0 / 6.0	2.4	13.0 / 10.0	8.0	24
➤ MwT-PH15	PHEMT	120 / 240	2.5 / 0.0	200 / 130	3.0 / 2.0	1.2 / 2.5	1.0	12.0 / 6.0	1.0	13.0 / 10.0	8.0	65
➤ MwT-PH15QACSB	PHEMT	120 / 240	2.0 / 0.0	200 / 130	--	--	--	--	--	--	8.0	65
➤ MwT-PH16	PHEMT	150 / 360	2.5 / 0.0	280 / 180	3.0 / 3.0	1.2 / 2.5	1.0	12.0 / 6.0	1.0	13.0 / 10.0	8.0	45
➤ MwT-PH16A	PHEMT	300 / 600	2.0 / 0.0	400 / 300	3.0 / 2.0	1.2 / 2.5	2.0	8.0 / 6.0	2.0	13.0 / 10.0	9.0	30

NOTE: Contact Factory For Binning Ranges

Over 25 Years of Technical Expertise and Innovation

Wireless Amplifiers (MPS, ULA and WPS WiMax)



- Miniature, Low Cost, SMT, Flange, & Leadless Options
- Miniature, High Reliability, Hermetic SMT Options
- Low Noise, High Linearity, and Broadband Options
- Suitable for High Dynamic Range LNA Applications
- Suitable for High Linear Driver Amp Gain Stages
- Low VSWR for Improved Cascade Performance
- Single Voltage Supply and Low Current Operation
- Uses MWT's Hi-Rel and Space-Qualified GaAs Devices
- Most Parts are Eutectic Assembly for High Reliability
- Standard and Custom Amplifier Specifications
- High-Rel and Space-Rel Screening Available (class H, K, and S)

MWT High Linearity Driver Amplifiers

Model (Case Code - XX)	Case Code (- XX) Sealed SMT, Flange	Freq Range (MHz)	Linear Gain Typ/Min (dB)	Gain Flatness Typ/Max ± (dB)	VSWR Input Typ/Max (dB)	VSWR Output Typ/Max (dB)	Noise Figure Typ/Max (dB)	Pout @ -1 dB Typ/Min (dBm)	IP3 Typ/Min (dBm)	DC Voltage Applied (V)	DC Current Typ/Max (mA)
► New											
► MPS-0030H16-XX	02	10-3000	14.5/16.0	0.50/0.80	2.0 / -	2.0 / -	-	27.0 / 25.5	33.5 / -	7.0-8.0	240-270
► MPS-0325A9D-XX	82	300-2500	12.5/13.5	0.20/0.60	1.4 / 1.7	1.2 / 1.7	4.0 / -	25.0 / -	42.0 / 39.0	7.5	300-330
MPS-081017-XX	02	800-1000	15.0/14.0		2.0 / -	2.5 / -	-	28.5 / -	45.0 / 42.0	7.5	380-450
MPS-0810A9-XX	02	800-960	15.0/14.0		1.5 / -	2.0 / -	1.1 / 1.5	20.5 / -	34.0 / -	6.0	160-240
MPS-0810A9D-XX	82, -	800-960	14.0/13.0	0.20/0.30	1.4 / 1.5	1.2 / 1.5	5.0 / -	26.0 / 25.0	42.0 / 41.0	7.5	300-400
MPS-0820A9D-XX	02	800-2050	13.5/12.5		1.4 / -	1.4 / -	5.5 / -	24.0 / -	43.0 / -	6.0	220-280
MPS-093011-XX	82, 85, *	800-1000	16.0/14.0	0.25/0.50	1.5 / -	2.2 / -	6.0 / -	30.0 / -	45.0 / 43.0	7.5	380-450
MPS-1720A9-XX	02	800-960	14.0/13.0		2.1 / 2.2	1.5 / 2.1	1.1 / 1.5	20.0 / -	33.0 / -	6.0	100-140
MPS-172208-XX	82, 85	1900-2000	13.0/12.0	0.20/0.50	2.0 / 2.5	2.0 / 2.5	5.0 / -	26.0 / 25.0	38.0 / -	7.5	380-450
MPS-173011-XX	82, 85, *	1400-1700	14.0/13.0	0.25/0.50	1.5 / -	2.2 / -	6.0 / -	30.0 / -	45.0 / 42.0	7.5	380-450
MPS-1820A9D-XX	82, -, 02	1800-2000	14.0/13.0	0.20/0.30	1.4 / 1.5	1.2 / 1.5	5.0 / -	26.0 / 25.0	42.0 / 41.0	7.5	300-400
MPS-182117-XX	02	1800-2100	14.0/13.0		2.0 / -	2.5 / -	-	28.5 / -	45.0 / 42.0	7.5	380-450
MPS-182217-XX	82, -, 02	1800-2200	14.0/13.0	0.25/0.50	1.5 / -	3.0 / -	6.0 / -	28.5 / -	45.0 / 42.0	7.5	380-450
MPS-2125A9D-XX	82, -, 02	2100-2500	14.0/13.0	0.20/0.50	1.4 / 1.5	1.2 / 1.5	5.0 / -	26.0 / 25.0	42.0 / 41.0	7.5	300-400
MPS-213011-XX	82, 85, 02	1700-2100	14.0/13.0	0.25/0.50	1.5 / -	2.2 / -	6.0 / -	29.0 / -	45.0 / 42.0	7.5	380-450
MPS-242520-XX	-, 83	2400-2500	13.0/12.0	0.30/0.50	3.0 / -	2.0 / -	- / -	36.0 / 35.0	- / -	8.0	750-900
MPS-242717-XX	02	2400-2700	13.0/12.0		2.0 / -	-	-	28.0 / -	45.0 / 42.0	6.0-7.0	380-450
MPS-252730-XX	-, 83	2500-2700	13.0/12.0	0.40/0.60	3.0 / -	2.0 / -	- / -	36.0 / 35.0	- / -	8.0	750-900
MPS-253011-XX	02, 82, 85, *	2400-2700	13.0/12.0	0.25/0.50	1.5 / -	2.2 / -	6.0 / -	29.0 / -	45.0 / 42.0	7.5	380-450
MPS-343517-XX	02, 82	3400-3500	13.0/12.0	0.25/0.50	2.0 / -	2.2 / -	6.0 / -	29.0 / -	45.0 / 42.0	7.5	380-450
MPS-3435A9D-XX	82, -	3400-3500	13.0/12.0	0.20/0.30	1.4 / 1.5	1.3 / 1.5	6.0 / -	24.0 / 23.0	41.0 / 39.0	7.5	300-400
MPS-343617-XX	82	3400-3600	13.0/12.0		2.0 / -	2.2 / -	-	29.0 / -	48.0 / 44.0	7.5	350-420
MPS-343717-XX	02	3400-3700	12.5/11.7		1.5 / -	2.5 / -	-	28.5 / -	45.0 / 42.0	6.0-7.0	330-400
MPS-343717-XX	82	3400-3700	12.5/11.7		1.5 / -	2.5 / -	-	28.5 / -	45.0 / 42.0	6.7	380-450
MPS-363817-XX	82	3600-3800	13.0/12.0		2.0 / -	2.2 / -	-	29.0 / -	48.0 / 44.0	7.5	350-420
ULA 808-XX											
Special Order Only											
ULA 818-XX											
Special Order Only											
ULA 818-XX	82, -	1800-2100	14.0/13.0	0.25/0.50	2.0 / -	2.0 / -	- / -	28.0 / -	48.0 / 46.0	8.0	270-350
ULA 818-XX	82, -	800-1000	15.5/14.0	0.25/0.50	1.5 / -	1.5 / -	- / -	28.0 / -	48.0 / 46.0	8.0	270-350

* Hermetic Version Available (96 package)

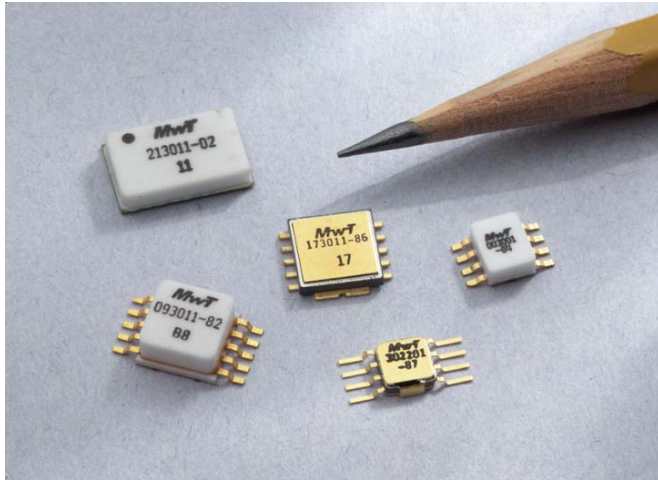
MWT Standard Low Noise Receiver Amplifiers

Model (Case Code - XX)	Case Code (- XX) Sealed SMT, Flange	Freq Range (MHz)	Linear Gain Typ/Min (dB)	Gain Flatness Typ/Max ± (dB)	VSWR Input Typ/Max (dB)	VSWR Output Typ/Max (dB)	Noise Figure Typ/Max (dB)	Pout @ -1 dB Typ/Min (dBm)	PAE @ -1 dB Typ (%)	IP3 Typ/Min (dBm)	DC Voltage Applied (V)	DC Current Typ/Max (mA)
► New												
MPS-080817P-XX	82, 85, 02	806-849	14.0/13.0	0.20/0.50	2.0/2.5	2.0/2.5	1.1/1.5	28.0/NA	26	44.0/42.0	7.5	330/400
MPS-080817N-XX	82, 85, 02	806-849	13.5/12.0	0.20/0.50	2.0/2.5	2.0/2.5	0.8/1.0	23.0/NA	26	36.0/33.0	7.5	180/250
MPS-0808A9-XX	85	806-849	16.0/14.0	0.20/0.50	2.0/2.5	2.0/2.5	1.1/1.5	22.0/NA	26	36.0/33.0	6.0	180/250
MPS-080917P-XX	85, 02	870-925	14.5/13.0	0.20/0.50	2.0/2.5	2.0/2.5	1.1/1.5	28.0/NA	26	44.0/42.0	7.5	330/400
MPS-080917N-XX	82, 85, 02	870-925	13.5/12.0	0.20/0.50	2.0/2.5	2.0/2.5	0.8/1.0	23.0/NA	26	36.0/33.0	7.5	180/250
MPS-0809A9-XX	82, 85	870-925	16.0/14.0	0.20/0.50	2.0/2.5	2.0/2.5	1.1/1.5	22.0/NA	26	36.0/33.0	6.0	180/250
MPS-090917P-XX	82, 85, 02	925-960	14.5/13.0	0.20/0.50	2.0/2.5	2.0/2.5	1.1/1.5	28.0/NA	26	44.0/42.0	7.5	330/400
MPS-090917N-XX	85, 02	925-960	13.5/12.0	0.20/0.30	2.0/2.5	2.0/2.5	0.8/1.0	23.0/NA	26	36.0/33.0	7.5	180/250
MPS-0909A9-XX	82, 85	925-960	16.0/14.0	0.20/0.50	2.0/2.5	2.0/2.5	1.1/1.5	22.0/NA	26	36.0/33.0	6.0	180/250
MPS-1718A9-XX	82, 85	1710-1785	15.5/14.0	0.20/0.50	2.0/2.5	2.0/2.5	1.1/1.5	22.0/NA	26	36.0/33.0	6.0	100/150
MPS-1820A9-XX	82, 85	1850-1910	15.5/14.0	0.20/0.50	2.0/2.5	2.0/2.5	1.1/1.5	22.0/NA	26	36.0/33.0	6.0	100/137
MPS-081017N-XX	02		800-960	13.5/12.0		2.0 / -	2.0 / -	1.0 / 1.3	21.0 / -	36.0 / -	6.0-7.0	180-250
MPS-081017P-XX	02		800-960	14.0/13.0		2.0 / -	2.0 / -	1.3 / 1.7	26.0 / -	44.0 / -	6.0-7.0	330-400

Note: Contact factory for hermetic package and low cost surface mount package.

Over 25 Years of Technical Expertise and Innovation

Wireless Amplifiers (MPS, ULA and WPS WiMax)



MwT Standard Broad Band General Purpose Amplifiers

Model (Case Code - XX)	Case Code (- XX) Sealed SMT, Flange	Case Code (- XX) Hermetic SMT	Freq Range (MHz)	Linear Gain Typ/Min (dB)	Gain Flatness Typ/Max ± (dB)	VSWR Input Typ/Max	VSWR Output Typ/Max	Noise Figure Typ/Max (dB)	Pout @ -1 dB Typ/Min (dBm)	PAE @ -1 dB Typ (%)	IP3 Typ/Min (dBm)	DC Voltage Applied (V)	DC Current Typ/Max (mA)
► New													
► MPS-002701-XX	84	-	00-2700	11.5/10.5	0.5/0.8	2.0/-	1.8/-	6.0/-	20.0/ 19.0	-	35.0/-	5.0	120/ 160
MPS-003001-XX	84	87	20-3000	11.5/10.5	0.80/1.20	1.6/ 2.5	1.6/ 2.5	4.0*/ -	21.0/ 19.0	30*	34.0/-	5.0	90/ 160
MPS-013001-XX	84	-	100-3000	11.5/10.5	0.80/1.20	1.6/ 2.5	1.6/ 2.5	3.5*/5.0*	21.0/ 19.0	30	34.0/-	5.0	90/ 160
► MPS-032701A-XX	82	96	300-2700	20.0/-	1.0/-	2.0/-	2.0/-	5.0/-	20.0/ 19.0	-	34.0/-	5.0	320/ 360
► MPS-0425A9D-XX	82	96	400-2500	14.0/13.0	-	1.4/ 1.7	1.2/ 1.7	-	25.0/-	-	42.0/-	7.5	300/ 330
MPS-082508-XX	82, 85	96	800-2500	13.0/11.0	0.50/1.00	2.0/ 2.5	2.0/ 2.5	5.0/-	27.0/ 26.0	25	38.0/ 36.0	12.0	200/ 300
MPS-302201-XX	-	87	100-3000	11.5/10.5	0.50/0.80	1.6/ 2.5	1.6/ 2.5	3.5*/5.0*	22.0/ 20.5	30	35.0/-	5.0	90/ 160

* NF - See Data Sheet

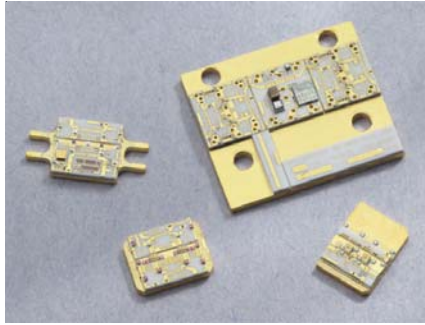
WPS - WiMax Amplifiers

Model (Case Code - XX)	Case Code Sealed	Freq Range (MHz)	Linear Gain Typ (dB)	Gain Flatness Typ/Max ± (dB)	VSWR Input Typ	VSWR Output Typ	P1dB Typ (dBm)	Pout @ 2.0% EVM Typ (dBm)	IP3 Typ/Min (dBm)	DC Voltage (V)	DC Current Typ/Max (mA)
► New											
WPS-242717-XX	02, 82	2450-2700	13.0	0.30/0.60	1.5	2.5	28.5	22.0	45.0	7.5	330
WPS-252717-XX	82	2500-2700	13.0	0.30/0.60	1.5	2.5	28.5	22.0 ⁽¹⁾	45.0	7.5	300
WPS-252724-XX	02, 99	2500-2700	14.0	0.30/0.60	1.5	2.5	36.0	29.0	50.0	8.5	1200
► WPS-303322-XX	02	3000-3300	13.0	0.30/0.60	1.5	2.5	32.0	26.0 ⁽¹⁾	47.0	8.0	600
WPS-343617-XX	82	3400-3600	13.0	0.30/0.60	1.5	2.5	29.0	22.0 ⁽¹⁾	48.0	7.5	380-450
WPS-343717-XX	82	3400-3700	13.0	0.30/0.60	1.5	2.5	29.0	22.0 ⁽¹⁾	45.0	7.5	380-450
WPS-343722-XX	02	3400-3700	13.0	0.30/0.60	1.5	2.5	32.0	26.0 ⁽¹⁾	47.0	8.0	600
WPS-343724-XX	02, 99	3400-3700	14.0	0.30/0.60	1.5	2.5	36.0	29.0	50.0	8.0	1200
WPS-363817-XX	82	3600-3800	13.0	0.30/0.60	1.5	2.5	29.0	22.0 ⁽¹⁾	48.0	7.5	380-450
► WPS-444922-XX	02	4400-4900	11.0	0.30/0.60	1.5	2.5	32.0	26.0	47.0	7.5	600
► WPS-445122-XX	02	4400-5100	11.0	0.30/0.60	1.5	2.5	32.0	26.0	47.0	7.5	600
► WPS-495122-XX	02	4900-5100	11.0	0.30/0.60	1.5	2.5	32.0	26.0	47.0	7.5	600
WPS-495917-XX	02	4900-5900	13.0	0.30/0.60	1.5	2.5	28.5	22.0	44.0	7.5	300
WPS-495922-XX	02	4900-5900	11.0	0.30/0.60	1.5	2.5	32.0	26.0	47.0	7.5	600
► WPS-545922-XX	02	5400-5900	11.0	0.30/0.60	1.5	2.5	32.0	26.0	47.0	7.5	600

⁽¹⁾ @ 2.5% EVM

Over 25 Years of Technical Expertise and Innovation

Hybrid Microwave Modules



- Miniature Drop-In Hybrid Amplifiers
- Low Noise, High Gain, and High Power Options
- Gain Block, Temp Comp, and Regulator Options
- Low VSWR for Improved Cascade Performance
- Single Voltage Supply and Low Current Design
- Uses MwT's Space-Qualified GaAs Devices and Thin Film Substrates
- 100% Eutectic Assembly Technique Assures High Reliability
- Standard and Customer Specific Specifications
- Connectorized Amplifier Options Upon Request
- High-Rel and Space-Rel Qualification Available

MwT Standard Gain Block Modules

Model	Freq Range	Linear Gain	Gain Flatness	VSWR : 1	Reverse Isolation	Noise Figure	Pout @ -1 dB	IP3	Current @ +8 V	Case Code	Carrier Size
	GHz	Typ/Min dB	Typ/Max ± dB	In & Out Typ/Max	Typ dB	Typ dB	Typ/Min dBm	Typ	Typ/Max mA		mil x mil
► New											
MwT 0206-11P2	2.0-6.0	6.0 / 5.0	0.4 / 0.6	1.7 / 2.0	-18.0	7.0	30.0 / 29.5	41.0	850 / 950	S/Z-1	300 • 600
MwT 0206-1G1	2.0-6.0	16.0 / 15.0	0.6 / 0.6	1.8 / 2.0	-30.0	4.5	17.0 / 16.0	27.0	150 / 180	U/L-1	300 • 600
MwT 0206-1G2	2.0-6.0	18.0 / 17.0	0.5 / 0.6	1.8 / 2.0	-30.0	3.5	19.0 / 18.0	29.0	150 / 200	U/L-1	300 • 600
MwT 0206-2P2	2.0-6.0	10.5 / 10.0	0.4 / 0.6	1.5 / 1.8	-20.0	4.5	24.5 / 24.0	35.0	220 / 260	S/Z-1	300 • 600
MwT 0206-7G2	2.0-6.0	11.0 / 10.5	0.4 / 0.6	1.5 / 1.8	-20.0	3.0	15.0 / 14.0	25.0	60 / 80	S/Z-1	300 • 600
MwT 0206-9P2	2.0-6.0	11.0 / 10.0	0.4 / 0.6	1.7 / 2.0	-20.0	4.0	26.0 / 25.0	37.0	260 / 290	S/Z-1	300 • 600
MwT 0206-A9G1	2.0-6.0	17.0 / 16.0	0.5 / 0.6	1.8 / 2.0	-30.0	1.5	15.0 / 14.0	25.0	50 / 55	S/Z-1	300 • 600
► MwT 0206-A9N2	2.0-6.0	15.0 / 12.5	2.0 / 2.5	1.7 / 2.0	-17.0	1.0	15.0 / 13.0	25.0	50 / 70	S/Z-1	300 • 600
MwT 0618-2P1	6.0-18.0	5.0 / 4.5	0.4 / 0.6	1.5 / 1.7	-20.0	7.0	24.8 / 24.0	35.0	200 / 250	S/Z-2	250 • 500
MwT 0618-2P2	6.0-18.0	5.5 / 5.0	0.3 / 0.5	1.5 / 1.7	-20.0	7.0	25.5 / 24.5	36.0	220 / 275	S/Z-2	250 • 500
MwT 0618-3P1	6.0-18.0	6.0 / 5.0	0.4 / 0.6	1.5 / 1.7	-20.0	6.5	20.5 / 20.0	30.0	100 / 120	S/Z-2	250 • 500
MwT 0618-3P2	6.0-18.0	6.5 / 6.0	0.3 / 0.5	1.5 / 1.7	-20.0	6.5	21.5 / 21.0	31.0	100 / 120	S/Z-2	250 • 500
MwT 0618-4N1	6.0-18.0	7.5 / 7.0	0.4 / 0.6	1.5 / 1.7	-20.0	4.5	14.0 / 12.0	25.0	40 / 60	S/Z-2	250 • 500
MwT 0618-4N2	6.0-18.0	8.0 / 7.5	0.4 / 0.6	1.5 / 1.7	-20.0	4.0	14.0 / 11.0	25.0	40 / 60	S/Z-2	250 • 500
MwT 0618-H4N2	6.0-18.0	9.0 / 8.5	0.4 / 0.6	1.5 / 1.7	-20.0	3.0	10.0 / 7.0	20.0	40 / 60	S/Z-2	250 • 500
MwT 0618-5G1	6.0-18.0	10.0 / 9.5	0.4 / 0.6	1.5 / 1.7	-30.0	5.5	16.0 / 14.0	26.0	90 / 100	S/Z-2	250 • 500
MwT 0618-5G2	6.0-18.0	10.5 / 10.0	0.4 / 0.6	1.5 / 1.7	-30.0	5.0	18.0 / 15.5	28.0	100 / 120	S/Z-2	250 • 500
MwT 0618-7G2	6.0-18.0	7.5 / 7.0	0.4 / 0.6	1.5 / 1.7	-20.0	5.0	15.0 / 14.0	25.0	60 / 80	S/Z-2	250 • 500
MwT 0618-12P2	6.0-18.0	4.6 / 4.2	0.4 / 0.6	1.5 / 1.7	-20.0	7.5	27.5 / 27.0	38.0	350 / 450	S/Z-2	250 • 500
MwT 0618-H15P2	6.0-18.0	8.5 / 7.5	0.4 / 0.6	1.5 / 1.7	-20.0	7.5	27.0 / 26.0	34.0	250 / 275	S/Z-2	250 • 500
MwT 0618-H15P3	6.0-18.0	7.5 / 6.5	0.4 / 0.6	1.5 / 1.7	-20.0	7.5	29.0 / 28.0	36.0	250 / 300	S/Z-2	250 • 500
MwT 0618-H16P3	6.0-18.0	5.0 / 6.0	0.8 / 1.2	1.7 / 2.0	-17.0	8.0	30.0 / 29.0	38.0	450 / 550	S/Z-2	250 • 500
► MwT 0618-H5G2	6.0-18.0	15.0 / 14.0	0.5 / 1.0	1.7 / 2.0	-17.0	3.0	20.0 / 17.0	29.0	80 / 120	S/Z-2	250 • 500
MwT 0618-H7P2	6.0-18.0	9.0 / 9.5	0.5 / 1.0	1.7 / 2.0	-17.0	5.5	21.0 / 24.0	33.0	110 / 150	S/Z-2	250 • 500
MwT 0820-3P1	8.0-20.0	5.0 / 4.5	0.4 / 0.6	1.5 / 1.7	-20.0	7.5	19.0 / 18.0	29.0	100 / 120	S/Z-2	250 • 500
MwT 0820-3P2	8.0-20.0	5.5 / 5.0	0.4 / 0.6	1.5 / 1.7	-20.0	7.0	20.0 / 19.0	29.0	100 / 120	S/Z-2	250 • 500
MwT 0820-4N1	8.0-20.0	6.0 / 5.5	0.4 / 0.6	1.5 / 1.7	-20.0	8.0	14.0 / 12.0	25.0	40 / 60	S/Z-2	250 • 500
MwT 0820-4N2	8.0-20.0	6.5 / 6.0	0.4 / 0.6	1.5 / 1.7	-20.0	4.0	14.0 / 11.0	25.0	40 / 60	S/Z-2	250 • 500
MwT 0820-5G1	8.0-20.0	9.0 / 8.0	0.4 / 0.6	1.5 / 1.7	-28.0	4.0	16.0 / 14.0	26.0	90 / 110	S/Z-2	250 • 500
MwT 0218-4N1	2.0-18.0	6.0 / 5.0	0.8	1.7 / 2.0	-20.0	7.0	15.0 / 14.0	25.0	100 / 120	S/Z-2	250 • 500
MwT 0218-4N2	2.0-18.0	6.5 / 6.0	1.2	1.7 / 2.0	-20.0	8.5	17.0 / 16.0	26.0	160 / 180	S/Z-2	250 • 500
MwT 0218-H4N1	2.0-18.0	12.0 / 11.0	0.8	1.7 / 2.0	-20.0	4.0	6.0 / 5.0	15.0	40 / 50	S/Z-2	250 • 500
MwT 0218-H4N2	2.0-18.0	11.0 / 10.0	0.8	1.7 / 2.0	-20.0	4.0	12.0 / 11.0	24.0	60 / 75	S/Z-2	250 • 500

Note: Typical 2nd Harmonics @ P-1-21.0 dBc Typ

MwT Standard Voltage Regulator Modules (Each Module Contains Dual Adjustable Voltage Regulators)

Model	Freq Range	Insertion Loss	Ripple Rej @ 120Hz	Pw Diss Per VR	Regulated Voltage	Supply Voltage	Total Sup. Current	Case Code	Carrier Size
	GHz	Typ/Max dB	Min dB	Max Watts	Min / Max V	Typ / Max V	Max mA		milxmil
MwT 0206-VRM	2.0-6.0	- / 0.5	50.0	1.5	7.9 / 8.1	12.0 / 20.0	800	U/L-1	300 • 600
MwT 0618-VRM	6.0-18.0	- / 1.0	50.0	1.5	7.9 / 8.1	12.0 / 20.0	800	U/L-2	250 • 500

MwT Standard Temperature Compensation Modules

Model	Freq Range	Insertion Loss	Loss Flatness	Atten.	Current @ +8 V	Case Code	Carrier Size
	GHz	Typ/Max dB	± Max dB	Typ / Min dB	Max mA		milxmil
MwT 0206-TCM	2.0-6.0	1.0 / 2.5	0.4 / 0.6	13.0 / 12.0	10 / 20	S/Z-1	300 • 600
MwT 0618-TCM	6.0-18.0	2.5 / 3.0	0.4 / 0.6	13.0 / 12.0	10 / 20	S/Z-2	250 • 500

Over 25 Years of Technical Expertise and Innovation

Standard, Military, and Hi-Rel Connectorized Amplifiers



Model Number Wide Band Amplifier Type	Freq Range GHz	Linear Gain dB MIN/TYP	Gain Flatness ±dB MAX	Noise Figure dB MAX/TYP	Pout-1dB dBm MIN/TYP	Current @ 12 V mA MAX *	Case Code
AW 052202N	0.5-2	30/33	1.4	2.5/2.2	15/17	300	SL-2
AW 052203	0.5-2	23/26	1.0	3.0/2.5	17/19	260	SL-2
AW 054201N	0.5-4	19/26	1.0	2.5/2.2	15/17	220	SL-2
AW 054203	0.5-4	21/24	1.0	4.5/4.0	16/18	260	SL-2
AW 12201N	1-2	28/31	1.1	2.5/2.2	18/20	225	SL-2
AW 12203	1-2	27/30	1.1	3.5/3.0	27/28	555	SL-2
AW 26201N	2-6	21/23	1.0	2.5/2.2	13/15	155	SL-2
AW 26204	2-6	19/21	1.0	4.5/4.0	23/24	335	SL-2
AW 28201N	2-8	29/32	1.5	3.0/2.5	13/15	175	SL-2
AW 28302	2-8	31/33	1.5	5.5/5.0	23/24	615	SL-3
AW 612301N	6-12	30/32	1.0	3.5/3.0	16/17	240	SH-3
AW 612304	6-12	22/23	1.0	6.5/6.0	27/28	750	SH-4
AW 1218301N	12-18	24/26	0.8	3.5/3.0	14/15	230	SH-3
AW 1218504	12-18	29/31	1.3	7.5/7.0	27/28	1200	SH-6
AW 818301N	8-18	24/26	1.0	3.5/3.0	14/15	230	SH-3
AW 818504	8-18	29/32	1.5	7.5/7.0	27/28	1300	SH-6
AW 618301N	6-18	24/26	1.3	3.5/3.0	14/15	230	SH-3
AW 618302	6-18	19/21	1.3	6.0/5.5	20/21	350	SH-3
AW 618404	6-18	20/22	1.5	7.5/7.0	27/28	1200	SH-5
AW 218201N	2-18	25/28	1.8	5.0/4.5	6/7	135	SH-2
AW 218301N	2-18	24/26	2.0	6.5/6.0	15/16	365	SH-3
AW 218301	2-18	20/22	2.0	6.0/5.5	20/21	500	SH-3
Model Number Temp Comp Amplifier Type	Freq Range GHz	Linear Gain dB MIN/TYP	Gain Flatness ±dB MAX	Noise Figure dB MAX/TYP	Gain vs Temp ±dB MAX	Current @ 12 V mA MAX *	Case Code
AT26301	2-6	21/23	1.0	6.0/5.5	0.8	300	SL-3
AT26401	2-6	36/40	1.5	5.5/5.0	1.0	470	SL-4
AT618401	6-18	22/24	1.0	7.5/7.0	0.8	380	SH-4
AT618501	6-18	31/33	1.3	7.0/6.5	0.8	500	SH-5
Model Number Limiting Amplifier Type	Freq Range GHz	Pin Dynamic dBm MIN/MAX	Noise Power dBm MAX	Pout-sat dBm MIN/MAX	Pout Flatness ±dB MAX	Current @ 12 V mA MAX *	Case Code
AL26501	2-6	-50/10	7.0	+15/+20	1.0	500	SL-5
AL618801	6-18	-50/10	10.0	+15/+20	2.0	800	LH-44
Model Number Low Noise Amplifier Type	Freq Range GHz	Linear Gain dB MIN	Gain Flatness ±dB MAX	Noise Figure dB MAX/TYP	Pout-1dB dBm MIN/TYP	Current @ 12 V mA MAX *	Case Code
AN12201N	1.2-1.8	28/31	0.5	-1.7	15/17	180	CL-1
AN23201N	2.2-2.9	28/31	0.5	-1.7	15/17	180	CL-1
AN45201N	4.4-5.0	25/27	0.5	-1.7	15/17	180	CL-1
AN78201N	7.2-7.8	23/25	0.5	-1.8	14/16	150	CH-1
AN910201N	9.0-10.0	21/23	0.5	-1.8	14/16	150	CH-1
AN1415301N	14.5-15.3	24/27	0.5	-2.1	13/15	200	CH-3
AN1718401N	17.7-18.7	29/32	1.0	-2.8	12/14	250	CH-3
Model Number Med Power Amplifier Type	Freq Range GHz	Linear Gain dB MIN	Gain Flatness ±dB MAX	VSWR In/Out MAX	Pout-1dB dBm MIN/TYP	Current @ 12 V mA MAX *	Case Code
AP45401	4.4-5.0	35.0	0.6	1.5/1.5	30.0/30.5	1400	CL-3
AP67402	5.9-6.4	33.0	0.6	1.5/1.5	33.0/33.5	2700	CL-3
AP78401	7.2-8.4	33.0	0.8	1.5/1.5	30.0/30.5	1450	CH-3
AP910401	9.0-10.0	32.0	0.8	1.5/1.5	30.0/30.5	1450	CH-3
AP1011401	10.7-11.7	27.0	0.8	1.5/1.5	30.0/30.5	1550	CH-3
AP1415401	14.0-14.5	23.0	0.5	1.5/1.5	29.0/30.0	1700	CH-3
AP1718501	17.7-18.7	24.0	1.0	1.8/1.8	26.0/27.0	1250	CH-5
Model Number Telecom Power Amplifier Type	Freq Range GHz	Linear Gain dB MIN	Gain Flatness ±dB MAX	IMD3 (dBc) @ Po dBm/Tone	Pout-1dB dBm MIN/TYP	Current @ 12 V mA MAX *	Case Code
AP1819701	18.1-18.6	30	0.5	-50@+15	27	2300	PH-01
AP1819801	18.1-18.6	35	0.5	-54@+15	29	2700	PH-01

Contact factory for application assistance on custom and standard amplifiers. Hi-Rel and Space-Rel screening are available.

* Built in voltage regulator.

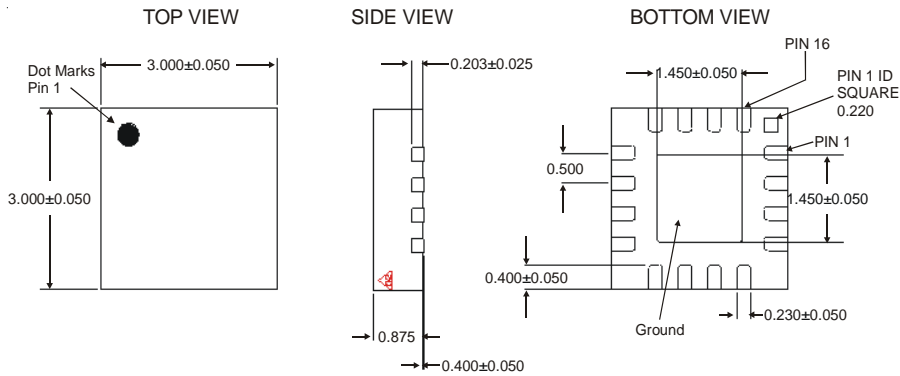
Over 25 Years of Technical Expertise and Innovation

Outline drawings

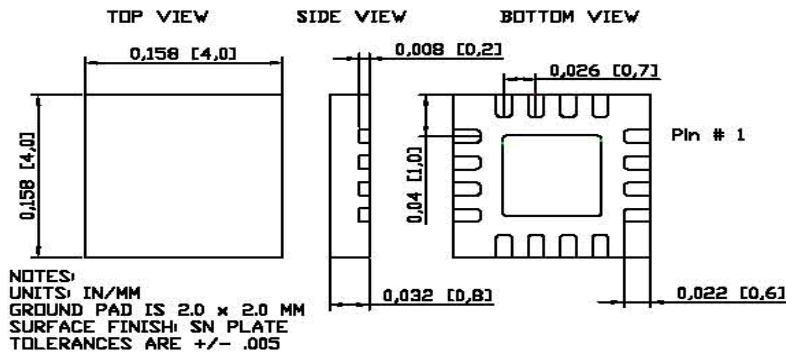
Dimensions in mm



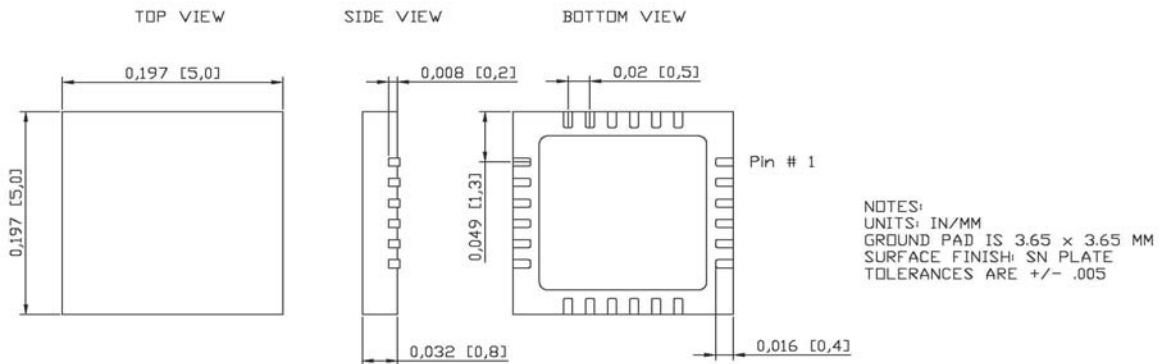
QFN 3 x 3



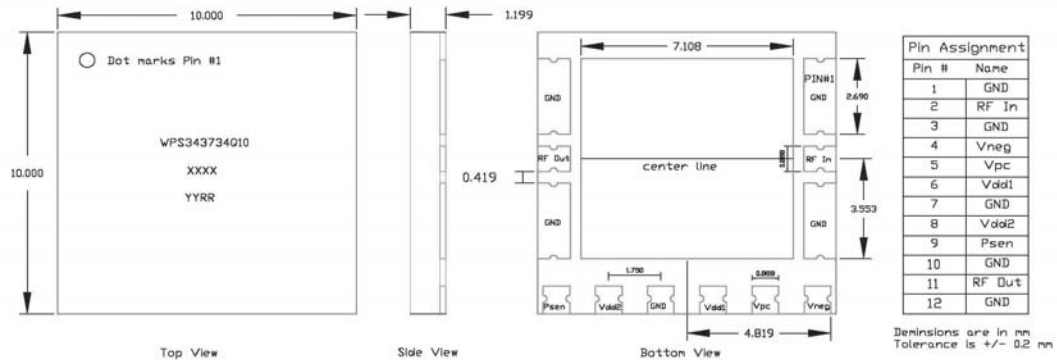
QFN 4 x 4



QFN 5 x 5



QFN 10 x 10

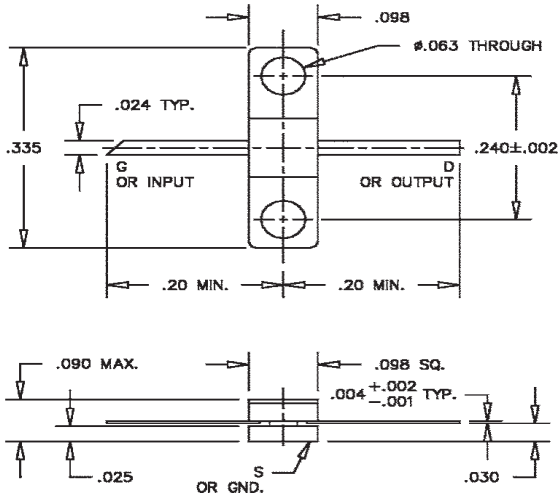


Outline drawings

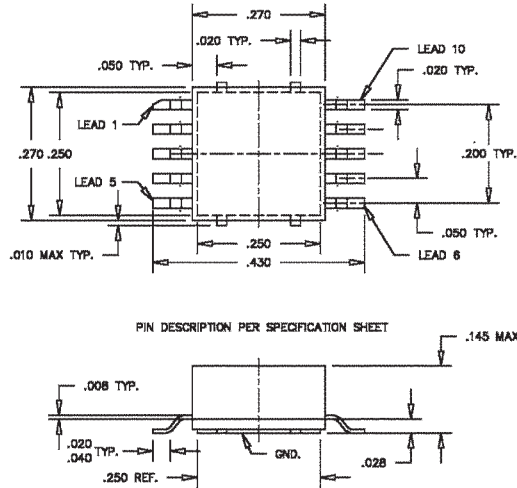
Dimensions in mm and inches (1 mm = 0.0394")



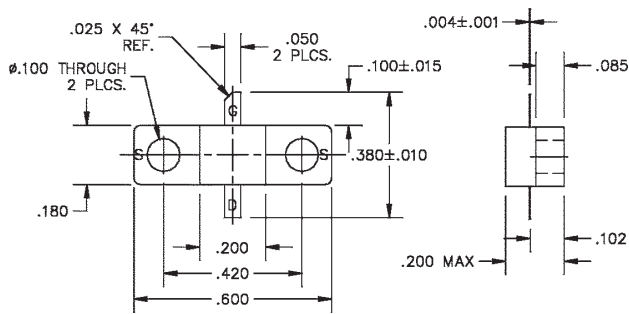
Package 81



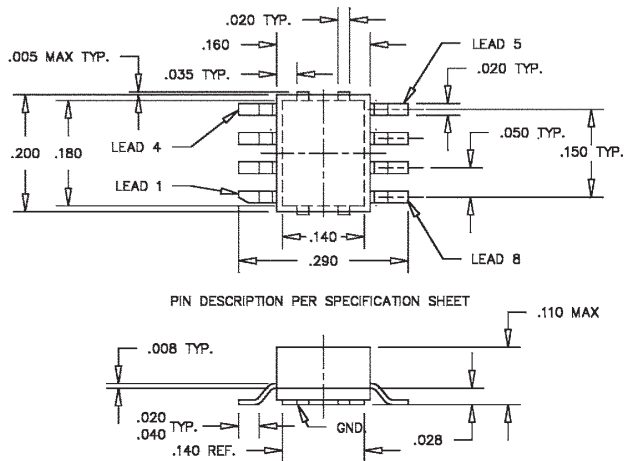
Package 82



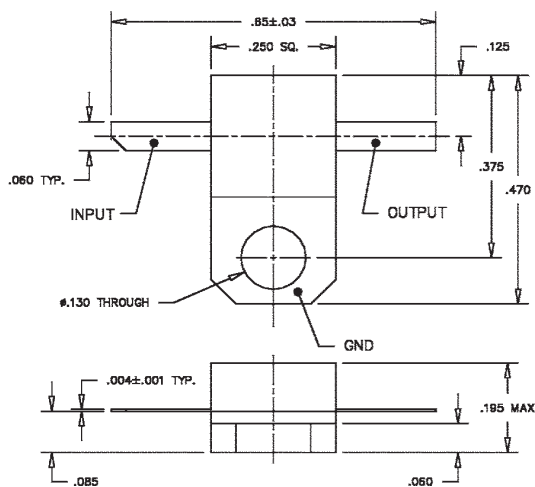
Package 83



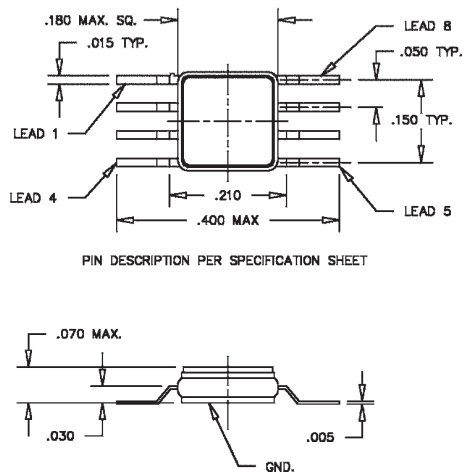
Package 84



Package 85

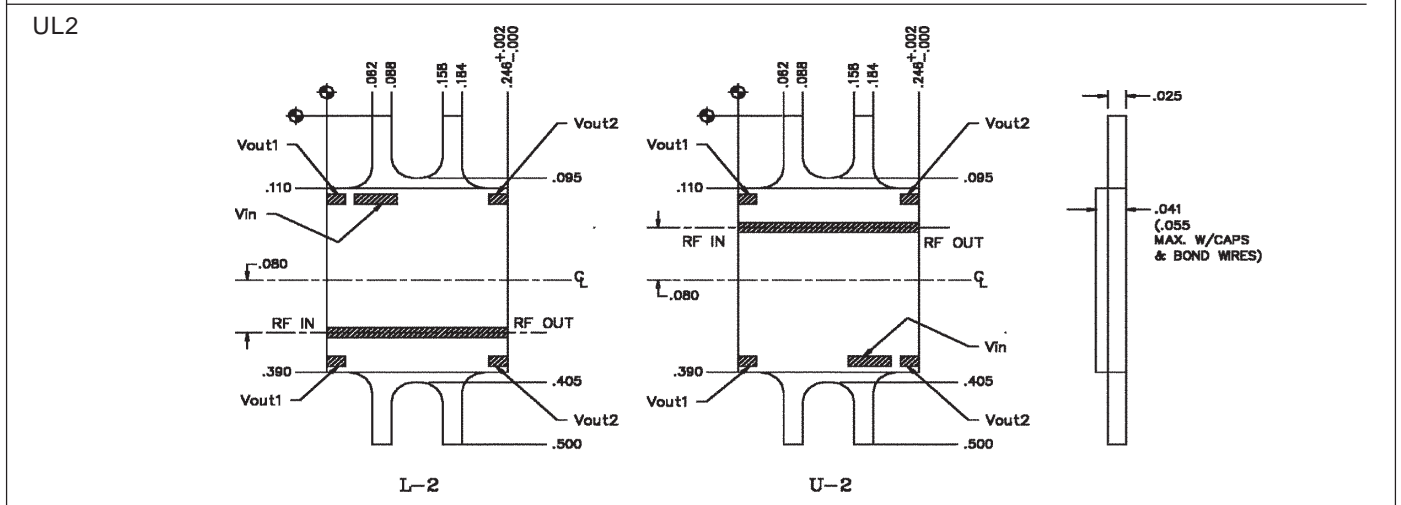
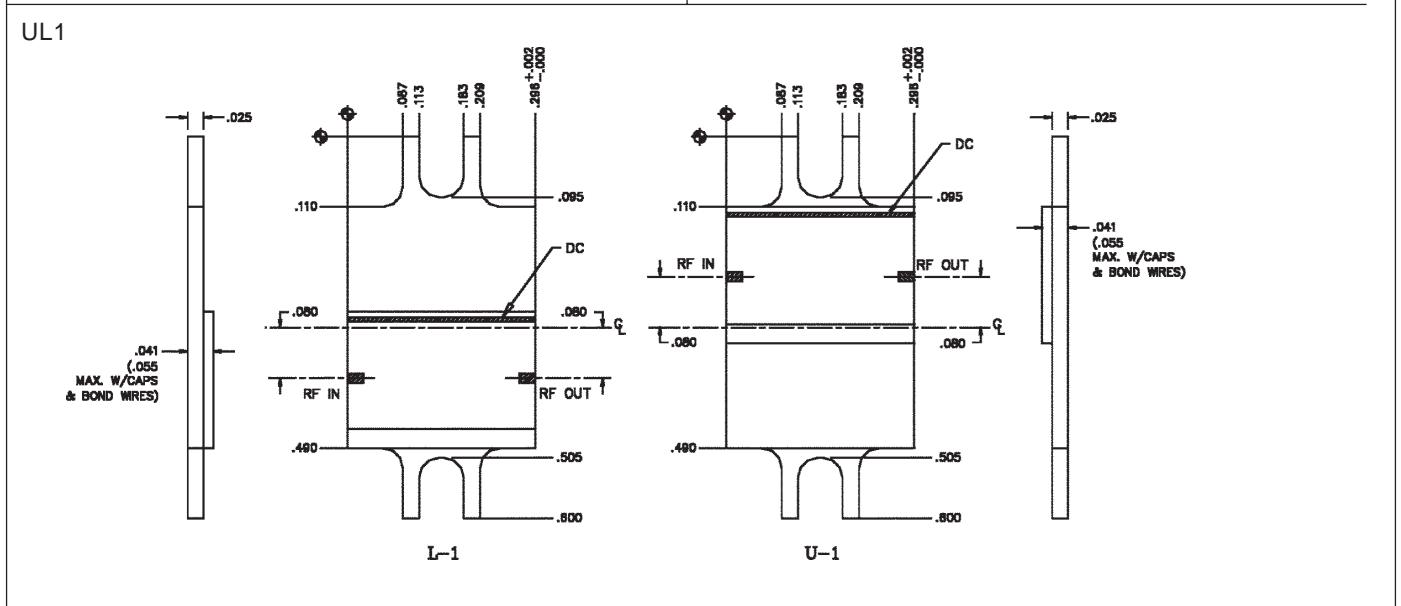
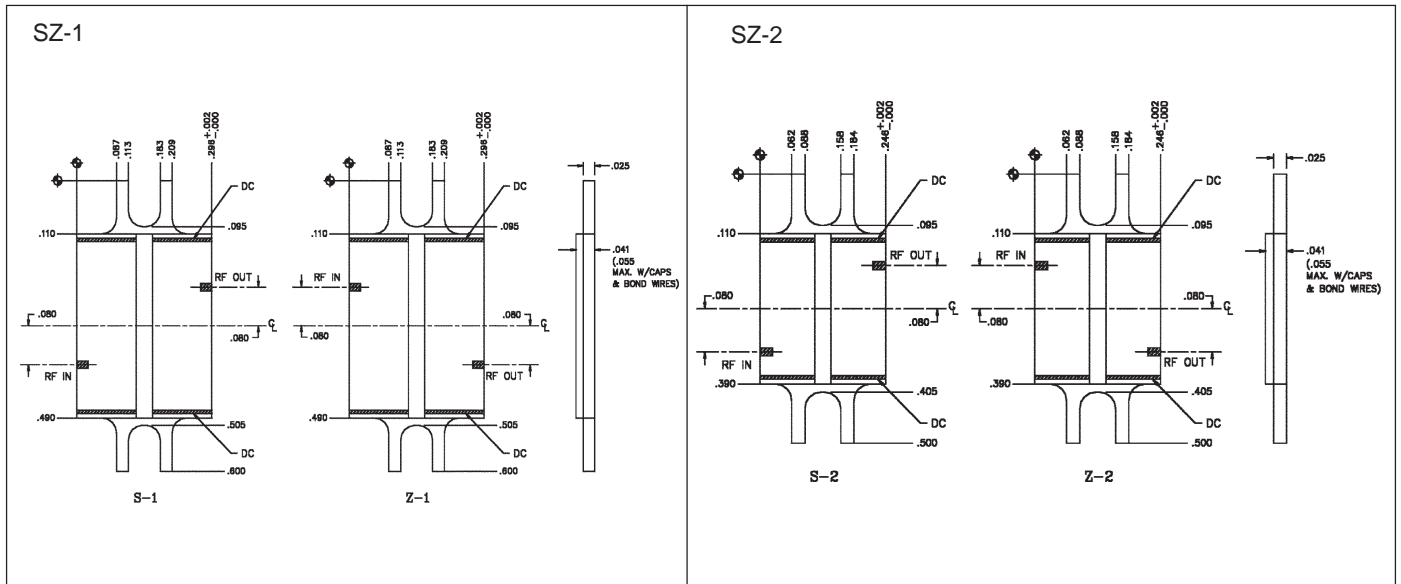


Package 87



Outline drawings

Dimensions in mm and inches (1 mm = 0.0394")



Contact Information



4268 Solar Way
Fremont, CA 94538
Phone: +1 (510) 651 6700
Fax: +1 (509) 472 0255
sales@mwinc.com

Human Resources
(510) 651-6700 x107
hr@ixys.net