

Duramax Marine.

Quality Engineered Products for Better Performance.

JOHNSON CUTLESS® SLEEVE & FLANGED BEARINGS

Cut maintenance time with Naval Brass Sleeve or Flanged Bearings. Non-Metallic Sleeve Bearings, also available, are ideal where corrosion or electrolysis is a problem.



DURACOOLER® KEEL COOLER

With an innovative streamlined header, the 90/10 copper nickel DuraCooler® delivers increased cooling efficiency to your vessel's engine or generator.



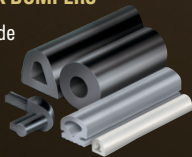
DRYMAX® SHAFT SEALING SYSTEM

With DuraChrome® Mating Ring to keep seawater out & bilge dry. Handles shaft axial and radial movement and eliminates wear on the shaft in the harshest environments.



COMMERCIAL DOCK BUMPERS

Duramax® offers a wide variety of durable rubber fendering for vessels and docks including D-Sections, O-Sections, Rectangular and Wing Types.



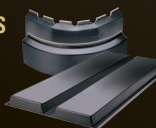
HEAVY DUTY STUFFING BOXES & ULTRA-X® COMPRESSION PACKING

Stuffing Boxes available in bronze or aluminum in full range of types and sizes. Use Ultra-X® Compression Packing with Stuffing Box to increase the performance and extend life of system.



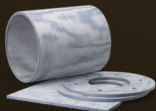
DURAMAX® TOW KNEES

Quality engineered Duramax® Tow Knee Pusher Plates provide superior protection. Single, Double or Pre-Curved models are available to suit every application.



DURABLU® COMPOSITE RUDDER BUSHING

Dimensionally stable bushing with very low thermal coefficient of expansion. DuraBlue® has a self-lubricating formulation for grease free operation.



Duramax Marine® is an ISO 9001:2015 Certified Company

DURAMAX MARINE®

www.DuramaxMarine.com

p: 440.834.5400 f: 800.497.9283

